



Special Inventory Announcement!

Surplus Shelving

We're excited to introduce a new inventory of surplus shelving, workstations, and poles—essential for any restaurant space. These shelving units and workstations are perfect for organizing orders, storing food and ingredients, and more. There's always a need for extra storage, and RestaurantEquipment.Bid is the top destination to find it!



Items Include: Red Wall Mounted Shelving, Free Standing Red Shelving Units, Metro Black Wire Shelving, Metro Workstations, and 75 lb concrete bases with 6' Black Poles.

Don't miss this spectacular opportunity to bid on this top-quality piece of equipment at unbeatable prices. at RestaurantEquipment.Bid

For more details on this special offering, contact Neal Sherman at nsherman@tagexbrands.com or 585.259.6353



Additional Information & Photos

Metro Workstations



- **Dimensions: (4 sizes)**

- 48"W x 24"D x 86"H
- 60"W x 18"D x 86"H
- 60"W x 24"D x 86"H
- 96"W x 24"D x 86"H

*sizing does not include the wrapping around the unit

*24" D units have additional pullout work stations

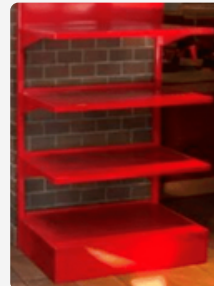
- Custom metro units that can be used in a variety of applications
- **All units include:** solid work surface, 2 wire shelves, cantilevered shelves, 12 clear binds, label/tape holder, and pole hangers

Metro Black Wire Shelving



- **Dimensions:** 48"W x 18"D x 74"H
- **Material:** Standard Metro Unit
- **Color:** Silver and Black
- **Contains:** 4 shelves/box

Free Standing Red Shelving Units



- **Dimensions:** 48"W x 18"D x 77"H
- **Material:** 18 g.a. steel
- **Color:** Power coated red
- **Contains:** 4 shelves

Red Wall Mounted Shelving



- **Dimensions:** 48"W x 18"D x 15"H
- **Material:** 18 g.a. steel
- **Color:** Power coated red
- **Contains:** 4 shelves/box

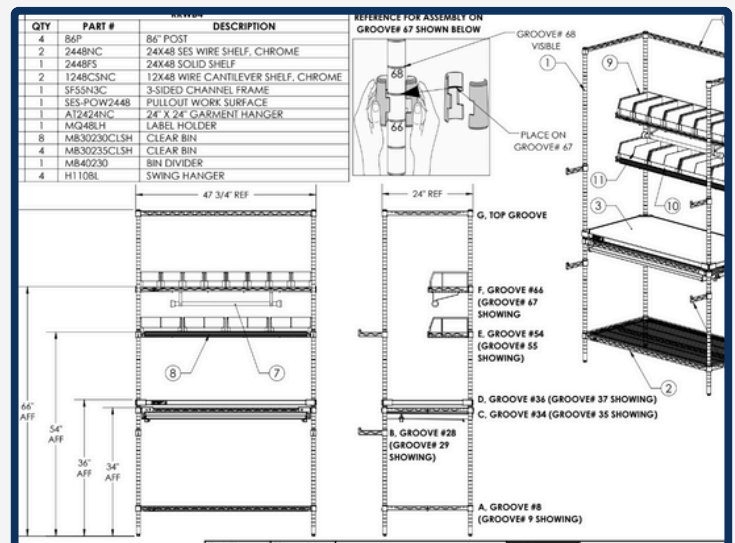
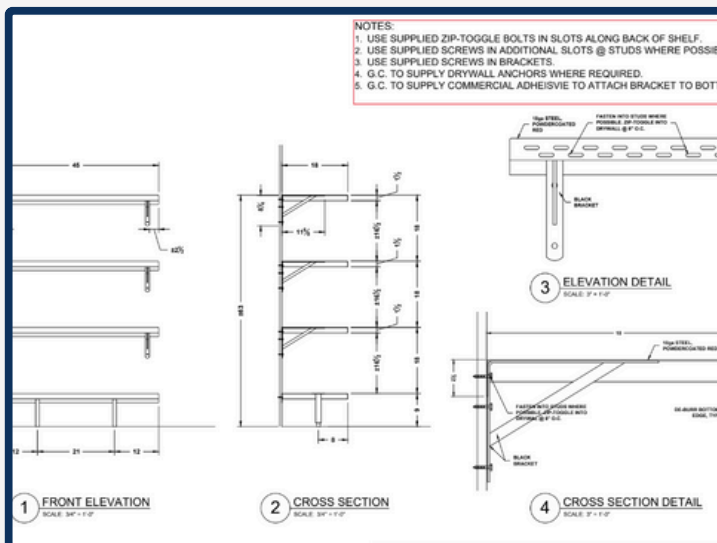
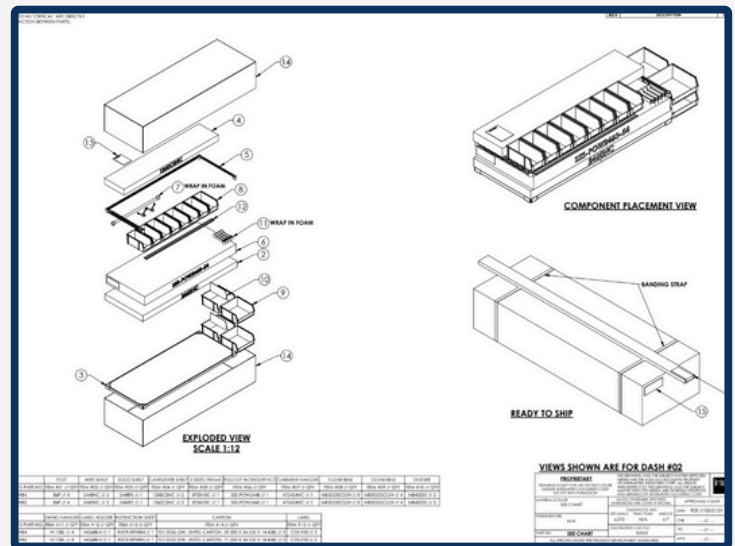
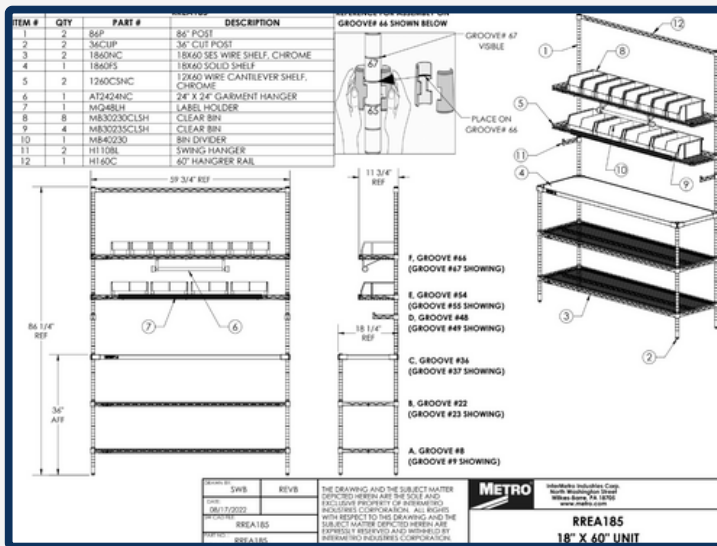
Black Pole with Concrete Bases



- **Dimensions:**
 - 6' Black Pole
 - 18" diameter concrete base
- **Weight:** 75 lb concrete base

Addition Information

At purchase, each workstation and shelving unit will include easy-to-follow assembly instructions to simplify the setup process. Below are examples of these straightforward directions



Special offering!!

Surplus Shelving

For more details and questions,
please contact Neal Sherman:

Phone Number: 585.259.6353

Email: nsherman@tagexbrands.com

& visit our sites:



tagexbrands.com



restaurantequipment.bid